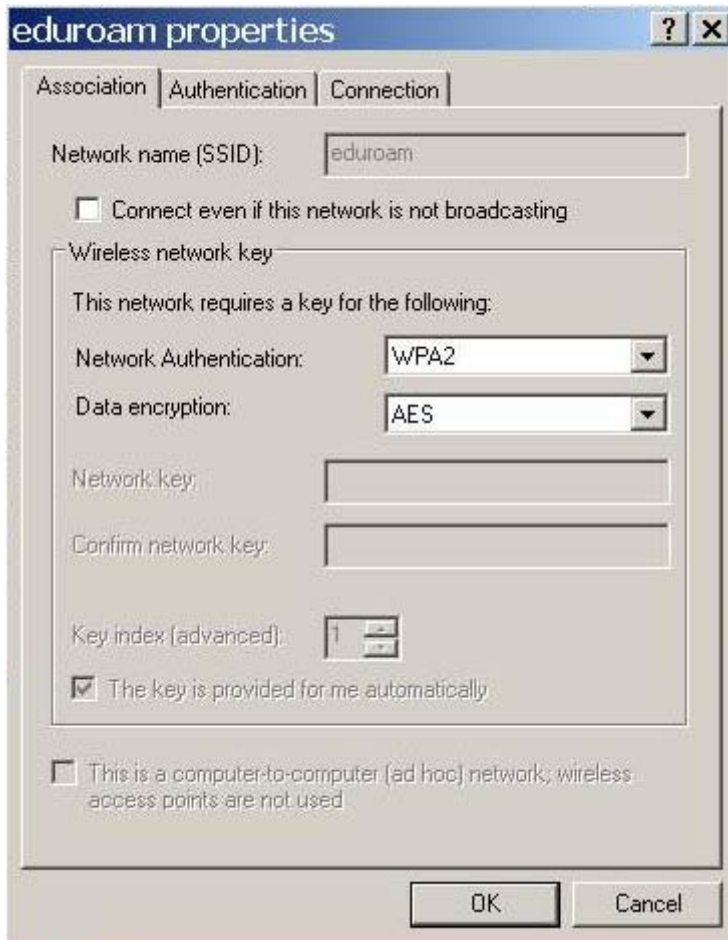


## 802.1X supplicant configuration for Windows XP

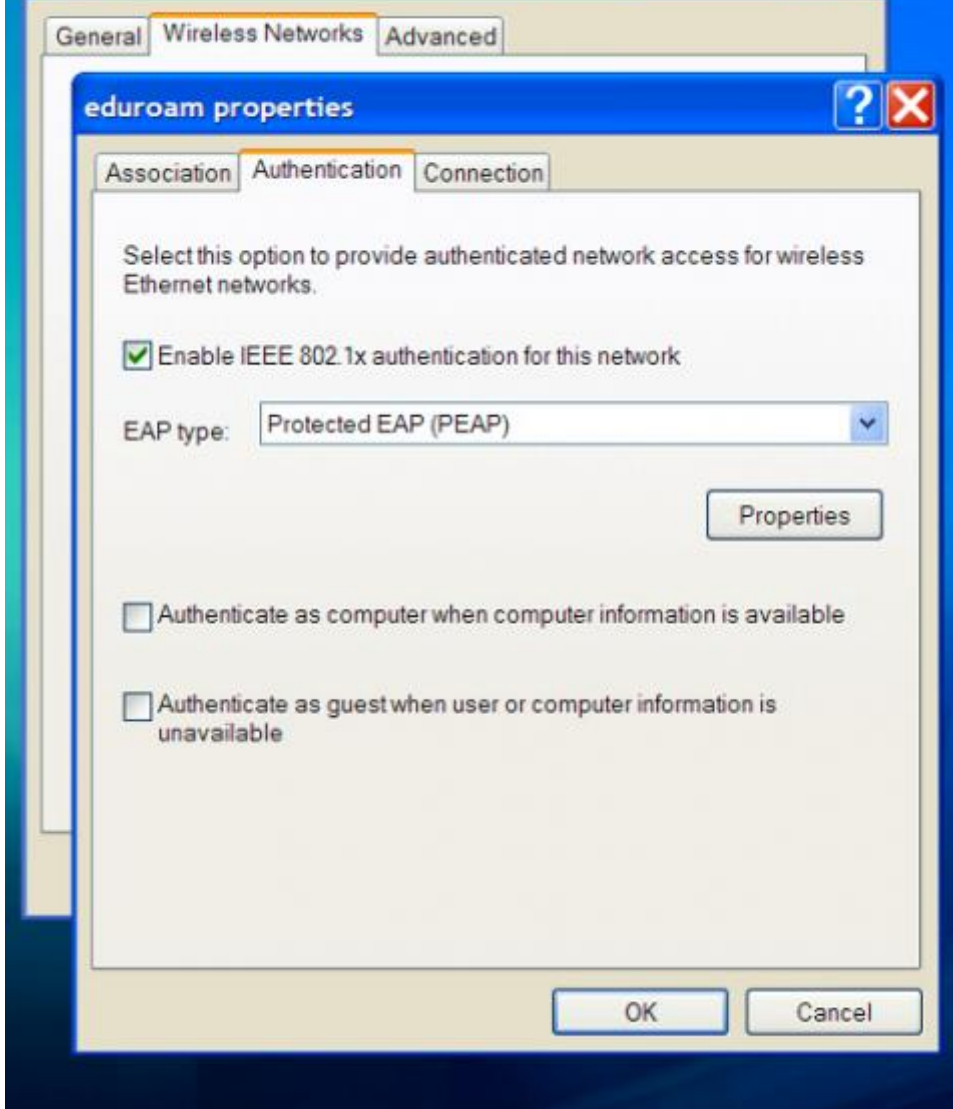
### 802.1X Supplicant Configuration

The following instructions are for Windows XP SP2: other platforms or software may display different menus and forms but the same information will need to be entered.

1. Right click on the **wireless network** icon in the system tray and select **View available wireless networks**
2. Select the '**eduroam**' SSID and click **Connect** (*this attempted connection will fail, but it will ensure that Windows is aware that the network exists*).
3. Select **Change advanced settings**
4. Select the **Wireless networks** tab
5. Select the 'eduroam' SSID from **preferred networks**
6. Click on **Properties**, which will open an **eduroam properties** window with the **Association** tab selected.
- 7.
8. Set **Data Encryption** to **WPA2**.
- 9.
9. Set **Data Encryption** to **AES**.
- 10.
11. Click on the **Authentication** tab

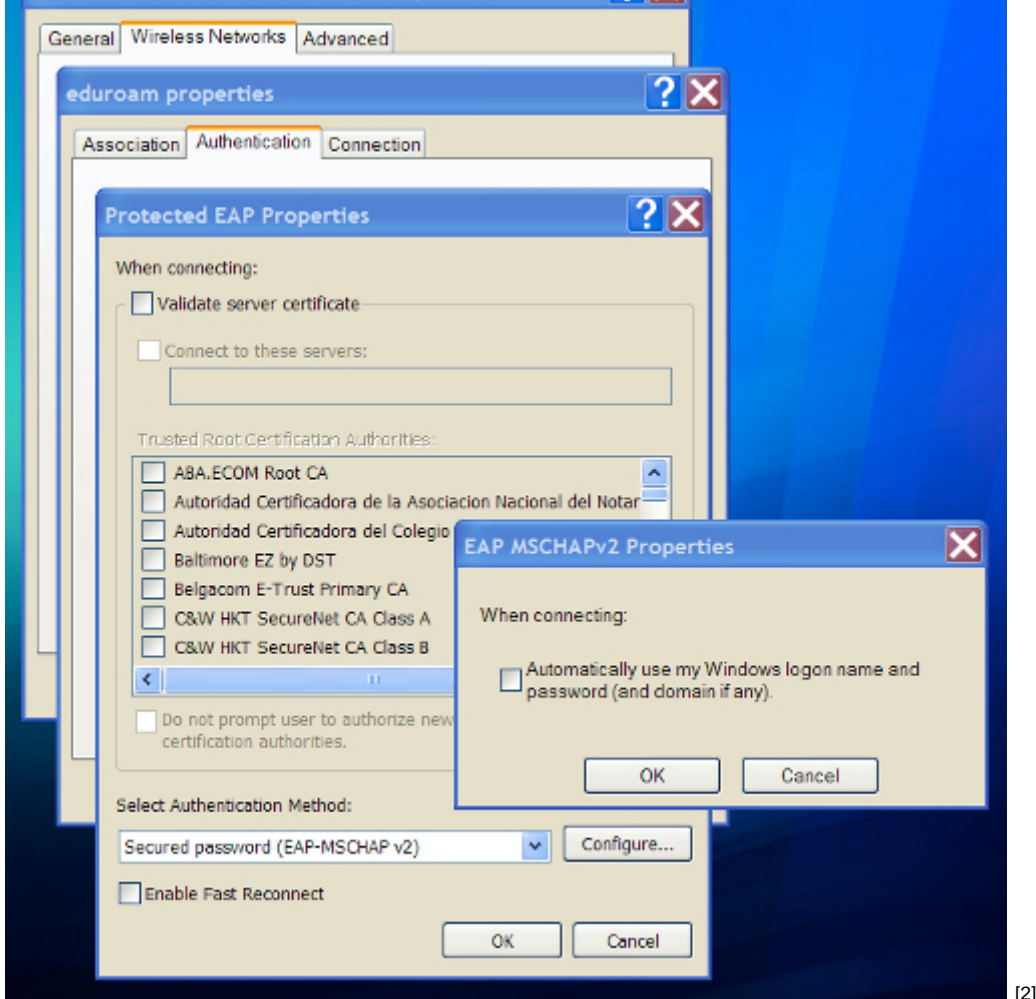


10. Ensure that **Enable IEEE 802.1X authentication for this network** is ticked.
11. Set the **EAP Type** to **Protected EAP (PEAP)**. Deselect **Authenticate as computer** and **Authenticate as guest**.



[1]

12. Select **EAP Properties**:
13. Select **Authentication method as Secured Password (EAP-MSCHAP v2)**.
14. Select **Configure...**
15. Ensure that **Automatically use my Windows logon name and password** is NOT selected. Click **OK** on the **EAP MSCHAP v2 properties** window.



[2]

16. If you do not have your organisations root certificate installed, ensure that **Validate server certificate** is NOT ticked.
17. If you do have your home organisation root certificate installed (optional):
  - a. Ensure that **Validate server certificate** IS ticked.
  - b. Choose the appropriate certificate from your **Trusted root certification authorities** list.
18. Click **OK** for the **PEAP Properties**.
19. Click **OK** for **eduroam Properties**.
20. Click **OK** for **Wireless Network Connection Properties**.
21. A dialogue balloon associated with the wireless network icon in the systems tray will appear, prompting the user to **Select a certificate or other credentials**. Click on this balloon.
22. In the resultant **Enter Credentials** window, enter your eduroam username (including realm) and password, leaving the **domain** field blank.

23. Click **OK**. Your laptop should now authenticate your credentials with your home organisation and, if successful, gain network access.

---

**Source URL:** <https://community.jisc.ac.uk/library/janet-services-documentation/8021x-supPLICANT-configuration-windows-xp>

#### **Links**

[1] <http://community.jisc.ac.uk/sites/default/files/802fig2.jpg>

[2] <http://community.jisc.ac.uk/sites/default/files/802fig3.jpg>